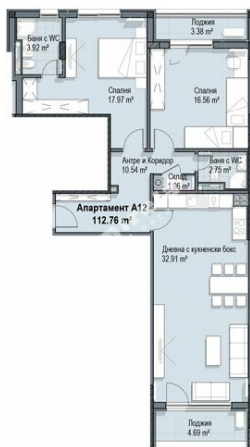


2-bedroom apartment, Krastova vada, city of Sofia,
135.65 sq.m, € 244 170 (£ 1 547 / \$ 1 923 / € 1 800 sq. m)



Apartment: A12

Total size: 135.65 sq.m (actual size + common parts)

Floor: 5

Bathrooms: 2

Stage of construction: Rough construction

Exposure: north, south

There are 2 balconies / terraces



Contact person

Elizabet Tsenova

Head Agent

Phone: 0883941935

Entrance: A

Built-up area:: 112.76 sq.m

Bedrooms: 2

Construction type: reinforced concrete structure

Completion date: 08.2024

Joinery: PVC five-chamber casement windows

Non-transition